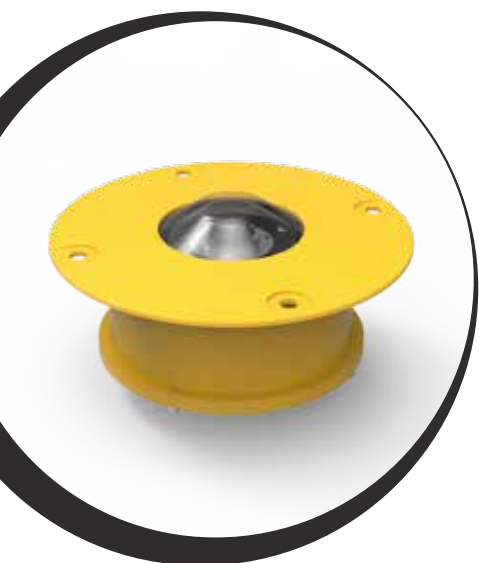


HPL-FATO-F



Fato binging is designed thinking about easy installation and maintenance device. Light arrangement should be in a straight line along of approach direction. Detailed information on the wider use of this product can be found in regulations of International Civil Aviation Organization (ICAO).

The luminaire is constructed of high-quality electronic components, high-efficiency diodes and diodes LED drivers. The lamp housing provides high resistance to unfavorable weather conditions due to the fact that it is made of borosilicate glass and aluminum. The whole luminaire is connected to the mounting base through a breakable connector (compliant with requirements of ICAO regulations). Optionally, there is a possibility of three stage regulation of the luminaire brightness (additional control inputs in std. 24V DC).

◆ Sanitary helipads



Commercial helipads

Producer:	APS AVIATION
Product code:	HPL-FATO-F-24 V DC
Voltage:	24 V DC +/- 10%
Power consumption:	< 10 W
Fault indication:	Yes (dry contact max. 50V, 1A)
Light color:	White / Green
IP:	IP67
Case:	Aluminium
Lampshade material:	Borosilicate glass

Breakable connector:	Yes (included)
Montage:	To the ground with mounting screws (not included) or to the SP-03 mounting seat
Temperature range:	-40°C to +55°C
Weight:	< 2 kg
Life expectancy:	> 100 000 h



ICAO Annex 14 Vol I, CE, ROHS, IP