

HPL-APR-F



Lightning systems of frame are very useful with pointing to the correct glide frame angle in the final approaching landing. Inset fixture of the approach frame is the most intended for halipads. Light arrangement should be in a straight line along of approach direction. More information about using this product you can find in regulations of International Civil Aviation Organization (ICAO) and Federal Aviation Administration (FAA).

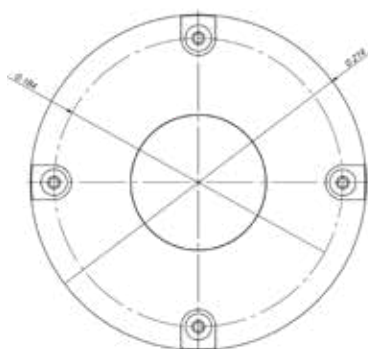
The binding is constructed of high-quality electronic components, high-performance diodes and diodes controllers LED. Lamp housing is made of borosilicate and aluminium glass, what's provides high resistance to unfavorable weather conditions. Lamp holder is connected with mounting base by breakable connector (according to requirements of ICAO). Furthermore the brightness of the luminaire can be adjusted in three stages (additional control inputs in std. 24V DC).

◆ Sanitary helipads



Producer:	APS AVIATION
Product code:	HPL-APR-F-24 V DC
Voltage:	24 V DC +/- 10%
Power consumption:	< 12 W
Fault indication:	Yes (dry contact max. 50V, 1A)
Light color:	White
IP:	IP67
Case:	Aluminium
Lampshade material:	Borosilicate glass

Breakable connector:	Yes (included)
Montage:	To the ground with mounting screws (not included) or to the SP-03 mounting seat
Temperature range:	-40°C to +55°C
Weight:	< 2 kg
Life expentency:	> 100 000 h



◆ ICAO Annex 14 Vol I, CE, ROHS, IP