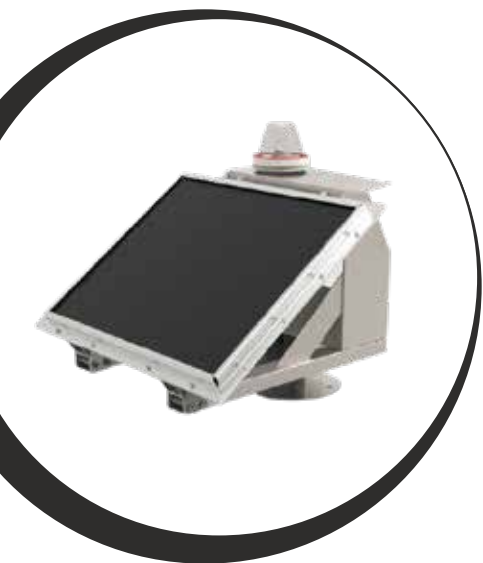


Low-intensity obstruction lighting

SOBL-R-10cd-24V DC / SOBL-R-32cd-24V DC



PRODUCT DESCRIPTION

The 10 cd and 32 cd low-intensity obstacle lighting luminaire produces a luminous flux visible in the vertical plane in the range of 4 to 20 degrees. A high-efficiency LED diode is used as the light source.

The use of high-quality materials used to build the luminaire ensures its trouble-free and long-term operation. The version of this lightning enables operation in single and double - master/slave mode.

PRODUCT APPLICATION

- ◆ Buildings
- ◆ Telecommunications masts
- ◆ Cranes
- ◆ Bridges
- ◆ Wind turbines
- ◆ Commercial helipad
- ◆ Sanitary helipad
- ◆ Airports

TECHNICAL DETAILS

Producer:	APS AVIATION
Product code:	SOBL-R-10cd-24V DC
Product code:	24V DC \pm 10%
Voltage:	< 2,5 W
Maximum power consumption:	Yes (changeover contact max. 50V, 1A)
Damage indication:	
Light color:	Red
Intensity (SOBL-R-10cd-24V DC):	10 cd
Intensity (SOBL-R-32cd-24V DC):	32 cd
Light type:	LED diodes, single/double operation possible

IP:	IP67
Twilight sensor:	Built-in
Luminous flux in the vertical plane:	360°
Luminous flux in the horizontal plane:	4° to 20°
Life expectancy:	100 000 h +
Case:	Aluminium
Lampshade material:	borosilicate glass
Tested ambient temperature:	-40°C to +50°C
Wind resistance:	To 240 km/h